



JEB
CONTRACTING

CAPABILITY
STATEMENT

WHY JB CONTRACTING



JB Contracting is headquartered in Kalgoorlie and offers a full range of contracting services to the exploration and mining sectors throughout Western Australia.

Since our establishment in 2020, we have evolved into a trusted exploration services partner with diverse customers throughout regional WA. We are a valued member of the Topgroup family, and work in partnership to deliver exceptional services to our clients.

Our reputation and growth are driven by our experienced team who have the expertise and training to tackle any job. We focus on understanding the needs of our clients and provide a full suite of services from first-stage earthworks, roading, pad preparation and logistics, through to mine site and exploration rehabilitation.

We take pride in our ability to meet the unique needs of each client and the quality of our work. We understand our responsibility to deliver results whilst ensuring our team thrive in an environment that prioritises their safety and wellbeing.

Acknowledgement

JB Contracting acknowledges that the land on which our head office is based has a deep connection to peoples and culture across the Western Australian region. As such, we acknowledge the Traditional Owners of this area, the Wangkatja people, and pay respect to the Elders past, present, and emerging. As an organisation with national reach, we extend our respect to all Elders and First nation peoples across Australia.

“
**WE DELIVER ALL
PROJECTS TO
SPECIFICATION,
ON TIME, AND
ON BUDGET,
WITH SAFETY AS
A PRIORITY.**
”



Our diverse fleet of earthmoving and civil equipment allows us to provide the right services for your project.

The JB Contracting leadership team's passion and experience allows us to deliver exceptional outcomes through professional service delivery. We understand the expectations of our clients and offer strategic growth and operational excellence as part of the synergies aligned with Topgroup.

OUR VALUES

Our values of People, Pride, and Performance are the guiding principles for working with the JB Contracting team. Our values drive the way we work, delivering results that exceed expectations, whilst ensuring employee safety and wellbeing.



People

- We put safety first, so we all thrive and arrive home safe each day.
- We treat people with respect and work as a team.
- We can be trusted and act with honesty and integrity.
- We are committed to a diverse and inclusive workplace, where people show up authentically and feel safe at work.



Pride

- We are accountable and take pride in our work.
- We are resourceful, resilient, and work together to find innovative and sustainable solutions.
- We are environmentally responsible and do the right thing, even when no one is looking.
- We make valuable contributions to the communities in which we work.



Performance

- We are passionate about being industry leaders and strive to set the benchmark for performance.
- We deliver for our clients and challenge ourselves to continuously improve.
- We value our reputation and are trusted to deliver on our promises.
- We work together to identify safety hazards and implement safer work practices and behaviours.

OUR VISION

To be your first choice for earthworks and rehabilitation, with expertise to complete any job. We always deliver.

OUR SERVICES



We pride ourselves on having experienced operators that are well trained, resourceful, resilient, and competent to meet the expectations of the most demanding environments throughout regional Western Australia.

JB Contracting offers a full range of contracting and civil services including:

Grid lines

Dust suppression

Water carting

Post-drill rehabilitation

Civil works

Pad preparation

Logistics

Waste dump rehabilitation

Site services

EXPLORATION



SITE REHABILITATION

JB Contracting is able to give clients flexibility of access to points requiring rehabilitation. Wheeled excavators allow soft transit between rehabilitation areas without the need for floating heavy tracked equipment.



DRILL PAD ACCESS

Wheeled loaders, excavators, and bulldozers are available to excavate drill pads suited to your ground conditions for the most efficient outcome.



CONSTRUCTION

JB Contracting has strategically invested in the right equipment, people, and skill base to deliver your project to your specific requirements.

MINING SERVICES



ROADS & ACCESS

JB Contracting can assist in constructing and maintaining haul roads, rebuilding damaged road sections, or creating new access for your exploration requirements.



INFRASTRUCTURE

JB Contracting is experienced at construction to detailed specification with cost effective solutions. We have access to quarry materials around Western Australia to ensure quality and cost effectiveness.



VEGETATION CLEARING

JB Contracting has a fleet of wheeled loaders, excavators, and bulldozers with blades, buckets and scarifiers to suit any vegetation type and ensure it is removed using the most suitable equipment.

JB Contracting also provide general mine site services such as waste dump re-shaping and rehabilitation to create best outcomes using latest 3D-GPS equipped machines. We can also assist with road closure works, dust suppression, camp de-commissioning, and site rehabilitation.

CIVIL INFRASTRUCTURE



REMOTE CAMP CONSTRUCTION

JB Contracting has access various size remote camps and can source and execute rapid establishment of camps (from 3 man to 100 man).



ROADS

Graders, side tippers, rollers, water carts, and bulldozers are available for maintaining haul roads and rebuilding damaged road sections.



FREIGHT & LOGISTICS

JB Contracting has the team and equipment to be able to bring all your freight to site. From rubbish removal to sample runs, we can provide logistical solutions for all your on site requirements.

OUR EQUIPMENT

JB Contracting operates and maintains a wide range of plant and equipment, including specialised scarifying rehabilitation equipment. Whatever your project requirements, we can provide the necessary resources to complete your work to the highest standard.



TRACKED EXCAVATORS

- 20 - 36 tonne Komatsu and Hitachi tracked excavators
- Available with 3 metre scarifier for efficient site scarification and vegetation spreading
- Wide range of attachments to suit with trenching buckets, tilt mud buckets and rock breakers available



WHEELED EXCAVATORS

- 21 tonne Hyundai Excavator
- Specialist excavators for efficient moving
- Ideal for pad preparation and rehabilitation on remote sites where travel distances between targets is an issue
- Rock breakers also available for excavation in tough ground



WHEEL LOADERS

- 12 -30 tonne wheel loaders
- Custom built front mount scarifier and rear rippers available
- Ideal for efficient track clearing and pad preparation and rehabilitation



GRADERS

- 140m Caterpillar graders
- Best in class grader for all track and road building and maintenance
- Skilled operators on hand for all civil requirements



BULLDOZERS

- D8T Caterpillar bulldozers
- Multi-shank and single shank rippers
- Ideal for heavy earthworks, pad preparation and mine closure works



WATER CARTS

- Rigid water carts 12,000 -18,000L
- Semi water carts 30,000L
- Road train water carts 60,000 - 90,000L



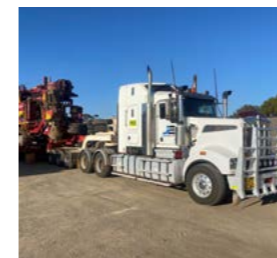
ROLLERS

- Smooth drum and pad foot machines available
- Rubber-tyred machines available



FIELD SERVICE TRUCKS

- Infield service trucks - 4500L diesel/4500L water/all oils and air
- Skilled and experienced team on hand to reduce machine downtime



HAULAGE

- Prime movers and a variety of trailers to suit requirements to move equipment around Australia
- 55 tonne payload floats
- 26 tonne payload dropdecks
- Flatdeck/dropdeck road train combinations



LIGHT VEHICLES

- JB Contracting LV fleet is standardised with Land Cruiser and Hilux vehicles
- All LV's are mine specification ready to ensure consistency
- IVMS fitted to all vehicles to manage vehicle locations and driver behaviours
- All JB Contracting vehicles carry an EPIRB for critical safety management

SAFETY

WORK SAFE, HOME SAFE.

JB Contracting gives workplace safety unconditional priority.

Understanding that our people underpin the performance of our business, we strive to ensure a safe and healthy work environment, at all times.

This is achieved through inducting staff and completing competencies to work safely.

We also provide regular training and the use of modern, well-maintained equipment and systems. We have implemented products and software designed to further keep our team and clients safe at all times.

We provide regular training and the use of modern, well-maintained equipment and systems. We have implemented products and software designed to further keep our team and clients safe at all times.



WE GIVE WORKPLACE SAFETY
**UNCONDITIONAL
PRIORITY.**



*A strong
commitment
within our
team.*

Understanding that our people underpin the performance of our business, we strive to ensure a safe and healthy working environment at all times.

This is achieved through ensuring the competency of our staff along with regular training and the use of modern, well-maintained equipment and systems. We have implemented and will continue to develop processes designed to keep our team and clients safe at all times, such as the recent addition of the JESI journey management system.

SAFETY & COMPLIANCE



Our team maintains daily hour recording for monitoring and tracking against budget on behalf of our clients.

To meet our needs for real time and transparent information, we have partnered with CorePlan to use their digital operations platform for plod management. CorePlan includes an intuitive mobile app for our crew to complete plods, and a web portal for both supervisor review and client approval.



QuikTrak is a GPS enabled digital vehicle tracking system that is fitted to all vehicles in the JB Contracting fleet.

QuikTrak provides vehicle locations in real time, as well as providing alerts for a predetermined set of metrics such as speeding. This allows the JB Contracting management team to monitor potentially risky driving behaviours and take the appropriate action.



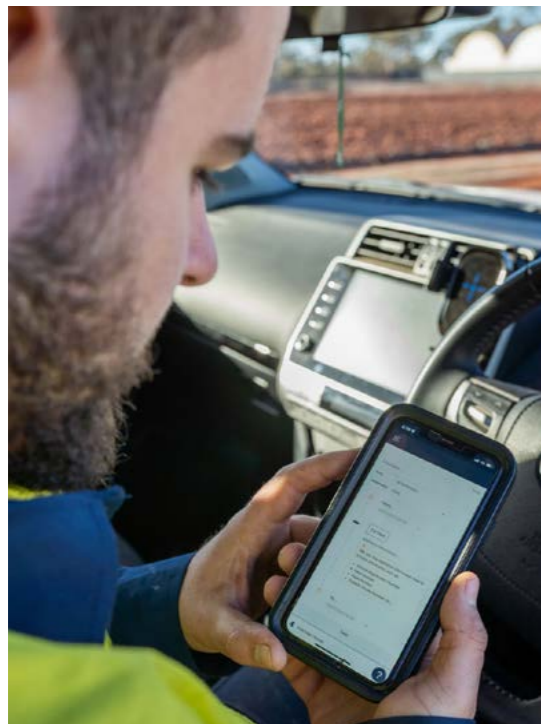
PeopleTray is a complete integrated platform for communication, compliance, and training.

The platform allows JB Contracting to digitally and seamlessly manage our team, their competencies, and daily legislative requirements such as paperless vehicle pre-start inspections.



GeoMoby is an industry leading technology that JB Contracting has integrated into its organisation ensuring clients adhere to, and respect, potential Aboriginal cultural heritage sites on their tenements and work areas. This technology is GPS guided and geofenced, allowing heavy plant tracking via an app based system.

This technology also allows JB Contracting to provide monthly reporting on vehicle movements.



We work in remote and isolated locations everyday so it's important everyone stays safe.

JESI is a digital journey management software that enables JB Contracting to safeguard their travelling employees, whether they are flying, driving, or commuting between work sites.

Allows users to plan a journey, select mode to travel, and create checkpoints.

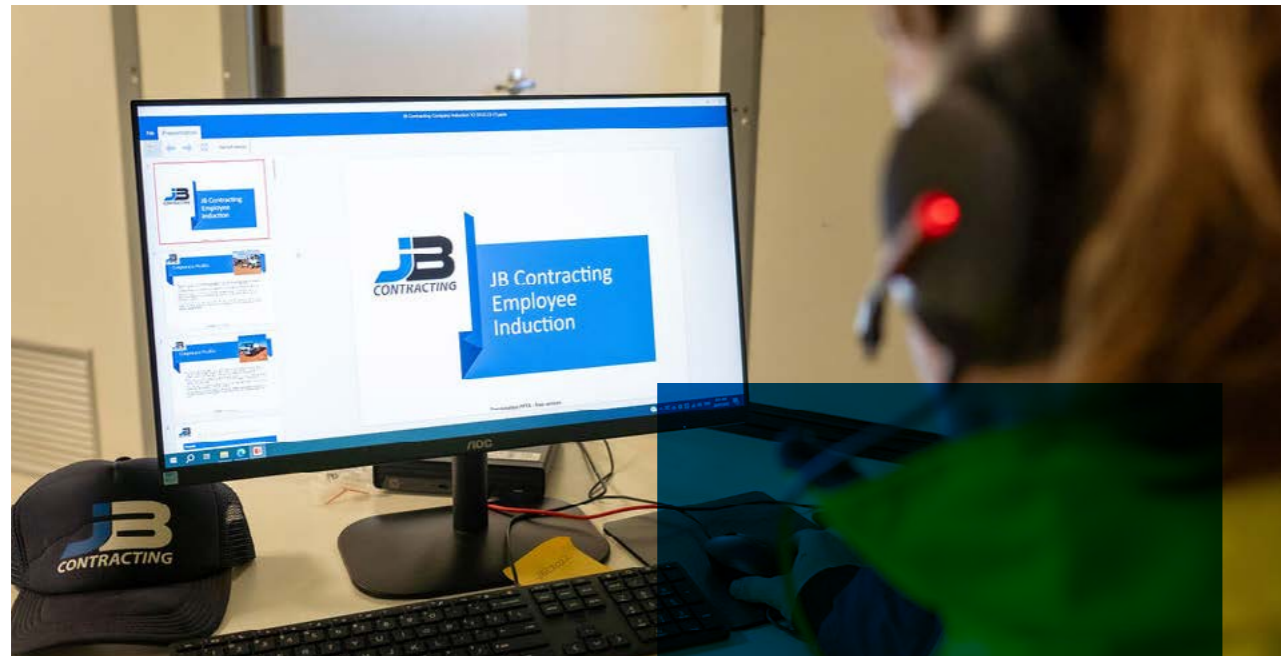
If checkpoints are missed, JESI creates an escalation process to allocate appropriate resources.

Monitoring checkpoints helps to ensure the safety of our team, no matter where they work.

JESI provides the necessary support to keep our entire team safe at all times.

TRAINING

Training at JB Contracting is achieved through ensuring our staff are inducted, competent and able to work safely in all environments.



JB Contracting is committed to training and education of all staff to ensure they have the skills and knowledge to contribute to the delivery of safe programs.

We encourage strong communication within our team and utilise the PeopleTray digital compliance system to collate and manage our training and compliance VOC's.

Our training is based on internal competency (VOC's) and external certification programs. Our goal is to provide staff with training and certification to support their career in the industry.

PeopleTray connects our team to all areas within our business from safety compliance, rosters, to health and safety reporting. It increases our business visibility, builds strong communication, and improves our collaboration.



Contact Us

Managing Director: Jason Brown

Phone: 0419 717 694

Email: jason@jbcwa.com.au

Head Office

48 Great Eastern Highway,
Kalgoorlie, WA 6430

Postal Address

PO Box 10352,
Kalgoorlie WA 6430

www.jbcwa.com.au

